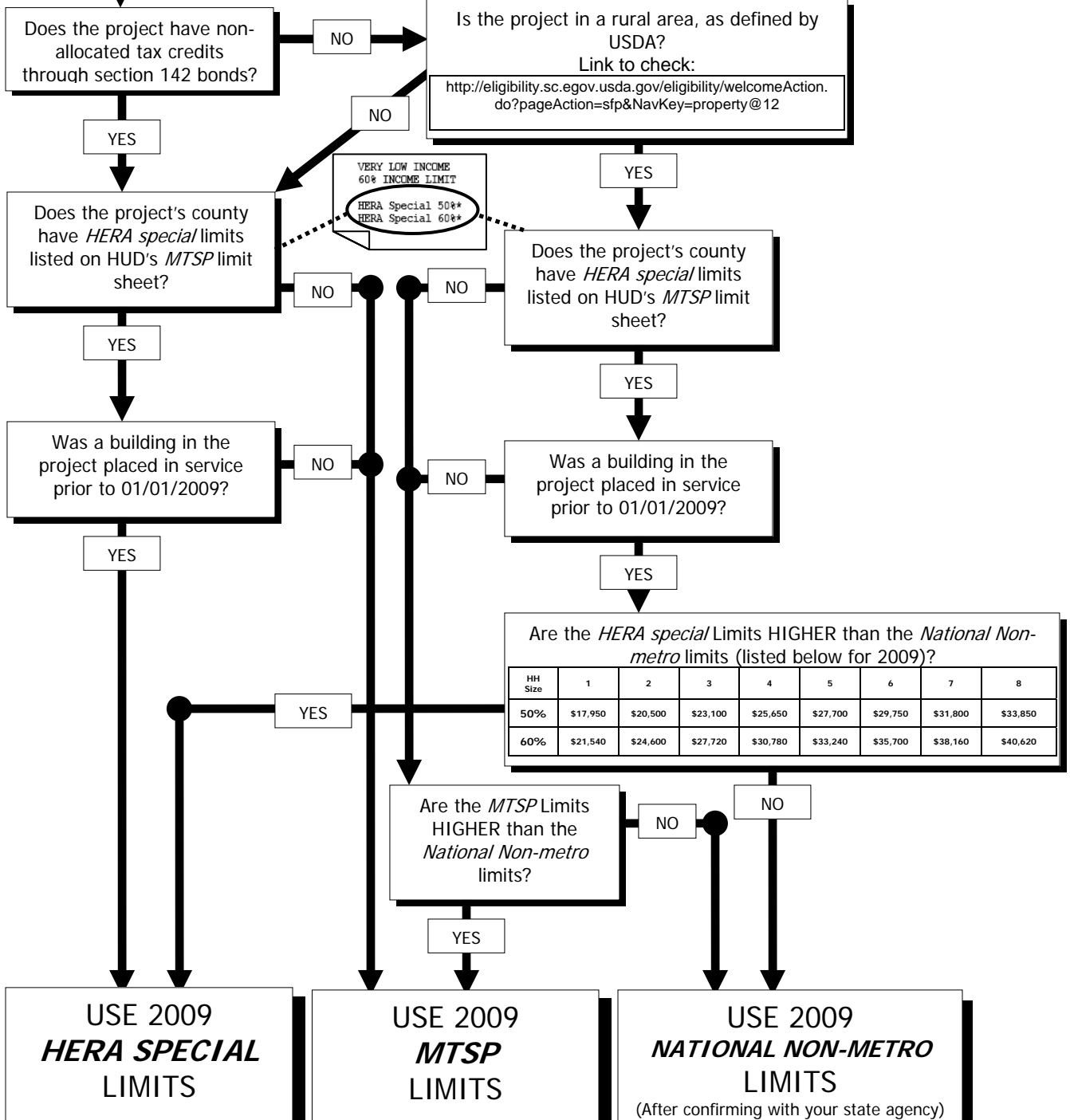


Finding the Correct 2009 MTSP Income Limits

Option # 1

For projects in states where the national non-metropolitan limit is GREATER than the state non-metropolitan limit.
If in doubt as to the above, this option will yield accurate results.

First Step: Get the 2009 HUD MTSP limits from www.huduser.org/datasets/mtsp.htm



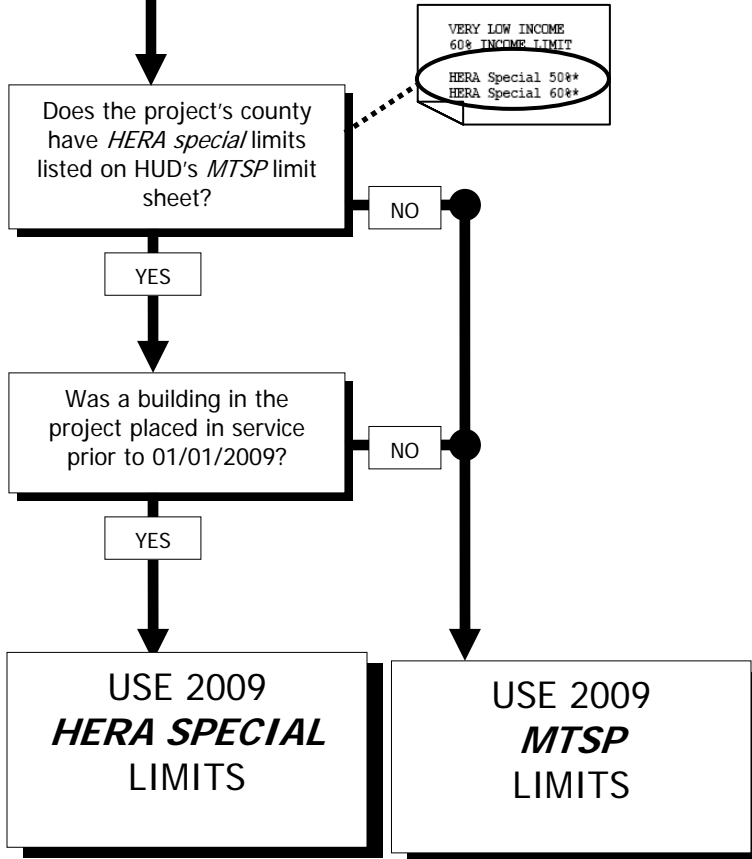
Final step: if other programs are on the project (such as HUD, RD or HOME), they each have their own limits. Use the lowest limits for each unit, as applicable.

Finding the Correct 2009 MTSP Income Limits

Option # 2

For projects in states where the national non-metropolitan limit is LESS than the state non-metropolitan limit.
If in doubt as to the above, *Option # 1* should be used

First Step: Get the 2009 HUD MTSP limits from www.huduser.org/datasets/mtsp.htm



Final step: if other programs are on the project (such as HUD, RD or HOME), they each have their own limits. Use the lowest limits for each unit, as applicable.